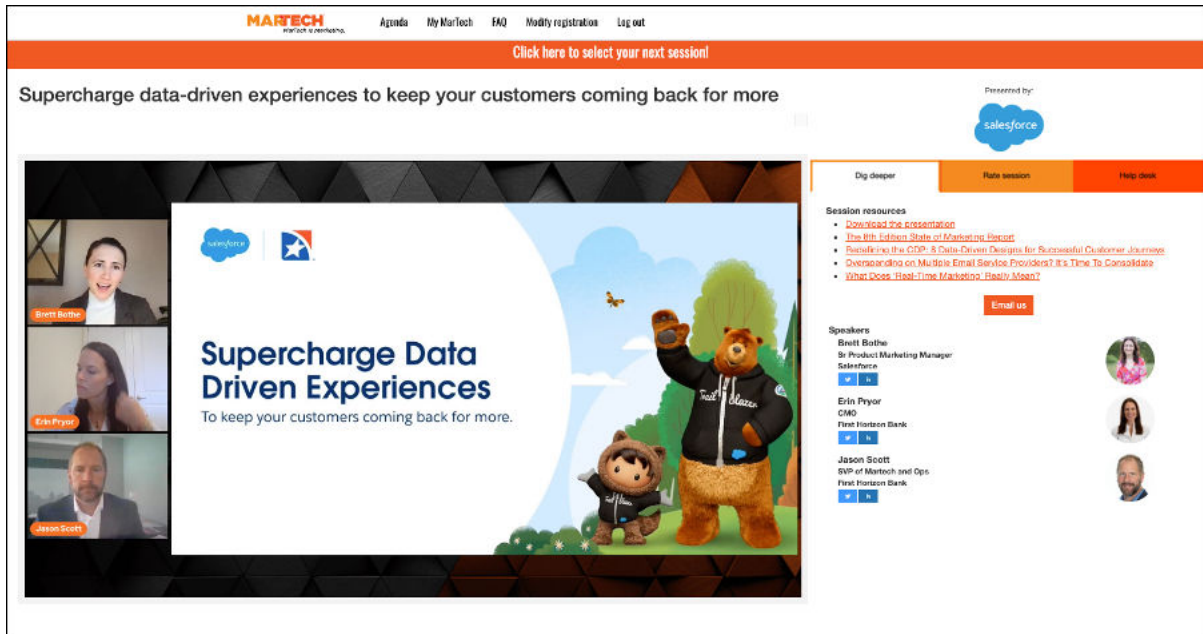


## The MarTech viewer console



The viewer console was designed with engagement in mind by providing attendees with easy access to your company resources, platform and/or services, and to facilitate their communications with you. This document describes the features of the viewer console and lists the information you need to provide in order to take advantage of each feature.

### Sponsor logo:

- The logo you upload into TDE platform will be displayed on the console and will link to the website URL you provide.
  - The logo must be transparent and 150x75 pixels.

### Dig Deeper tab

#### Resource Section:

- All resources must be uploaded into the TDE platform.
- If you have more than one presentation, you will need to assign resources to each.
- Resources can either be a PDF or URL.
- Gated websites or downloads (requiring registration) are not permitted.
- Please use sentence case for all resource titles. Sentence case involves capitalizing only the first word and any proper nouns.

**Speaker Info:**

- The console will list the name, title, company, links to Twitter and LinkedIn (if available), along with a headshot for each speaker in the session.
- The console includes an Email us button. This will be the address you provide in TDE in the field called "Public sponsor contact" and is required.

**Rate session tab:**

- Provides attendees the opportunity to score the presentation between 1 and 5 stars, and provide feedback comments about the presentation.

**Help desk tab:**

This tab is used by attendees to advise us of any technical issues. It is removed on the on-demand console.

**The presentation:**

- On the day of the event, the presentation will begin exactly at the scheduled start time listed on the agenda.
- Prior to the start, attendees will be on a "lobby" page that showcases your presentation's title. The lobby page will have a countdown timer and contain an FAQ on how to use the console interface. When your presentation is set to begin, the lobby page will refresh and re-direct to your console.
- On the day of the event, your presentation will be simulive. If someone joins late, they will not be able to replay any of the content that they missed as the event will be playing as if in real-time.
- Your presentation will be available on-demand shortly after the simulive presentation has ended.

If you have questions or need help, please contact Allison Lofaro at [alofaro@thirddoormedia.com](mailto:alofaro@thirddoormedia.com) or Karen DeWeese at [Karen@thirddoormedia.com](mailto:Karen@thirddoormedia.com).